

ELF-Straps



ELbow Flexion Cross Bar and Cable Control Strap Product Codes: ELFTAN/ELFBLACK

The ELF Cross Bar and Cable Control Strap eliminates forever your need to fabricate cross bar straps.

These straps were developed with over a year of rigorous field testing. The ELF Strap is designed to enhance cable excursion control by providing a platform and cable

housing, "tunnel" guide to maximize cable excursion around the elbow. Now elbow flexion can be added to the arsenal of gleno-humeral flexion and bi-lateral scapular abduction movements to help generate the cable forces needed to operate body powered prosthetic devices like GRIP Prehensors and V/O Split Hooks.

Features:

- Waterproof polyurethane material retains flexibility and strength for better cable performance and efficiency.
- Cable tunnel guide enhances cable excursion around the elbow dramatically improv-

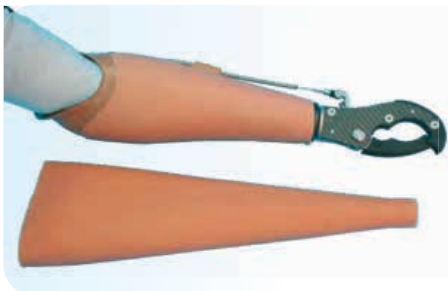
ing performance and increasing operational efficiency.

- Capable of being used with both Heavy Duty and Standard size cable housing. Special tubing is enclosed as an accessory that is used to increase the O.D. of Standard Size Cross bars so that they fit the ELF system.
- Unbreakable. ELF STRAPS survived over ONE MILLION cycles of "ninety degree flexion/extension" testing.
- Extra long to fit prosthesis with lower trim lines.
- Easily modified for length and mounting. Material cuts, drills and finishes professionally.
- Accessory kit includes mounting hardware and complete Installation Instructions.

SPECIFICATIONS

Length:	6.5 in. (16.5 cm)
Width:	.75 in. (1.9 cm)
Max. Width:	.96 in. (2.4 cm)
Thickness:	.125 in. (.32 cm)
Max. Thickness (@ Cross Bar):	.50 in. (1.3 cm)
Colors:	TRS Tan & TRS Stealth Black
Weight:	Under .5 oz. (14gm)

Arm Skinz



***ARM SKINZ are not designed for manual labor or rough, abrasive hobby environments. They are 100% waterproof.**

Features:

- Silicone material throughout in healthy, complimentary, skin tone, tan color.
- Stain resistant and waterproof. Easily cleaned.
- Custom colors available by special order at extra cost.
- Extra long tapered cones in two models fit a wide variety of prostheses.
- Excellent elasticity.
- Install easily similar to donning regular cosmetic glove technology.

SPECIFICATIONS

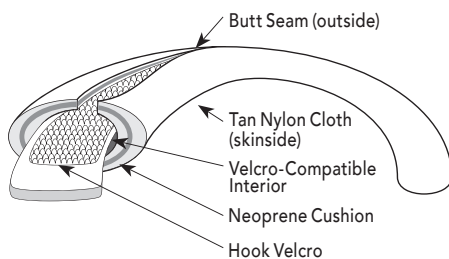
Length:	17 in. (43 cm)
Thickness:	Approximately .060 in. (.15 cm)

Elongated, cone configuration in two different tapers/models. See SIZING CHARTS (on website) to determine the best fit. Sized to fit most arm prostheses and smaller diameter (pediatric leg prostheses)

Adult and pediatric models.

Product Codes: ARM SKINZ/ADULT, ARM SKINZ/PEDIATRIC

TRS ARM SKINZ were developed especially to provide an improved cosmetic covering and surface texture alternative to hard, glossy prostheses for body powered and passive systems.



Product Code: AXL150, AXLBULK

Neo-Axilla Loop Padding

Features:

- Lightweight, never bulky.
- Washable.
- Soft tan color, nylon outside (skinside).
- Velcro compatible inside surface attaches to hook Velcro stitched to web along axilla area. Wrap around, peel off design.
- Won't chafe. Never sticky. Won't turn yellow.
- The best axilla loop material available.

SPECIFICATIONS

	AXL150	AXLBULK
Width	2-5/16 in wide	21 in wide
Length	12 ft roll	10 ft roll
Notes	AXL150 designed to wrap around 1 in. wide web.	AXLBULK. Customer can cut and size to meet their specific padding applications for either prosthetics or orthotics.